

MONTHLY MEMBERSHIP PROGRESS REPORT

District 9 NE

Results as of: 6/30/2024

GMT:

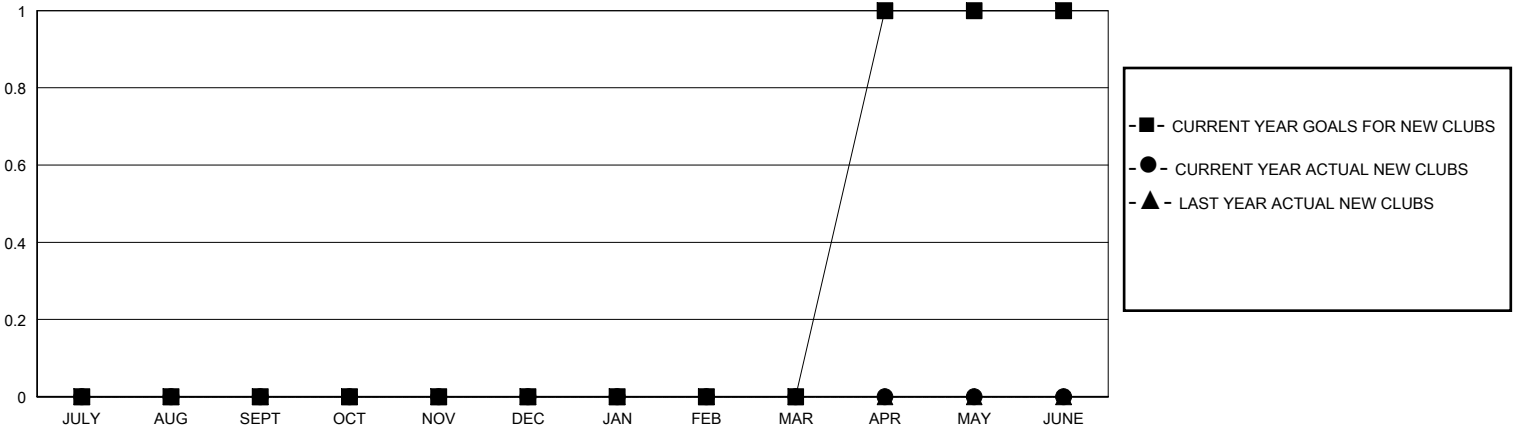
LOCATION IOWA

GMT CA

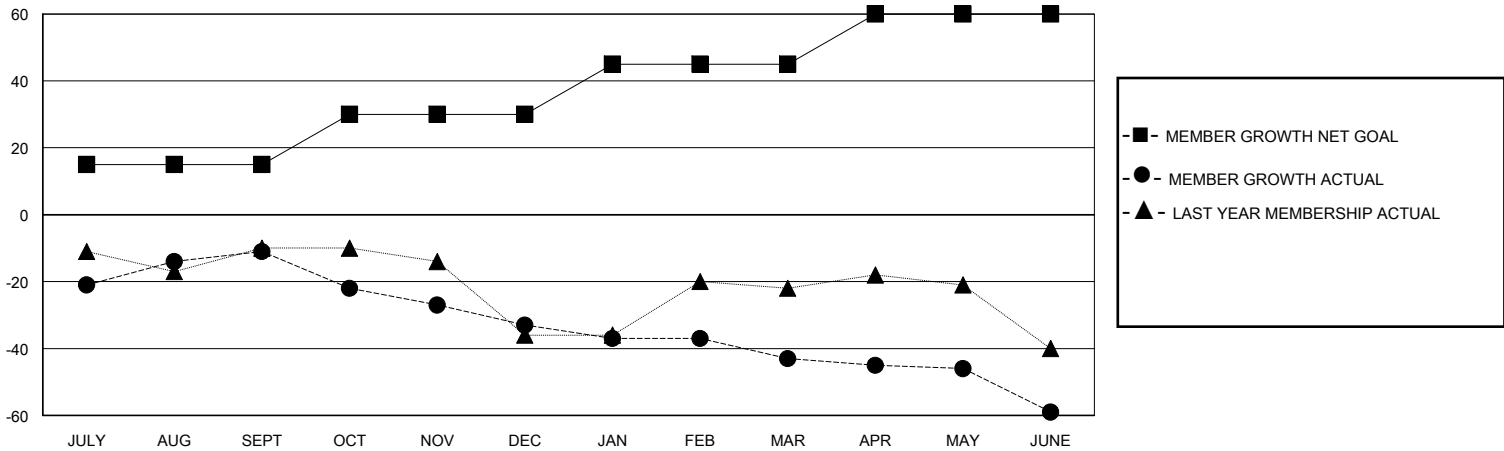
Clubs			
RESULTS FOR 2023-2024			
QUARTER	NEW CLUB GOAL	NEW CLUBS	DROPPED CLUBS
JULY/AUG/SEPT	0	0	0
OCT/NOV/DEC	0	0	0
JAN/FEB/MAR	0	0	0
APR/MAY/JUNE	1	0	0

Members			
RESULTS FOR 2023-2024			
QUARTER	MEMBER GROWTH NET GOAL	MEMBER GROWTH ACTUAL	DROPPED MEMBERS ACTUAL (including transfers)
JULY/AUG/SEPT	15	27	37
OCT/NOV/DEC	15	16	37
JAN/FEB/MAR	15	7	17
APR/MAY/JUNE	15	19	35

GOALS AND ACTUAL NEW CLUBS CUMULATIVE



GOALS AND ACTUAL MEMBERS CUMULATIVE



DROPPED CLUBS: 0	26 CLUBS OF 41 ADDED 1 OR MORE NEW MEMBERS	GENDER DISTRIBUTION MALE 822 (75.76%) FEMALE 263 (24.24%)
DROPPED MEMBERS DECEASED 18 CLUB CANCELLED 0 OTHER 108 TOTAL 126	CLICK HERE FOR CUMULATIVE MEMBERSHIP DATA	TOTAL FAMILY UNIT MEMBERS 162 FAMILY MEMBERS PAYING HALF DUES 81